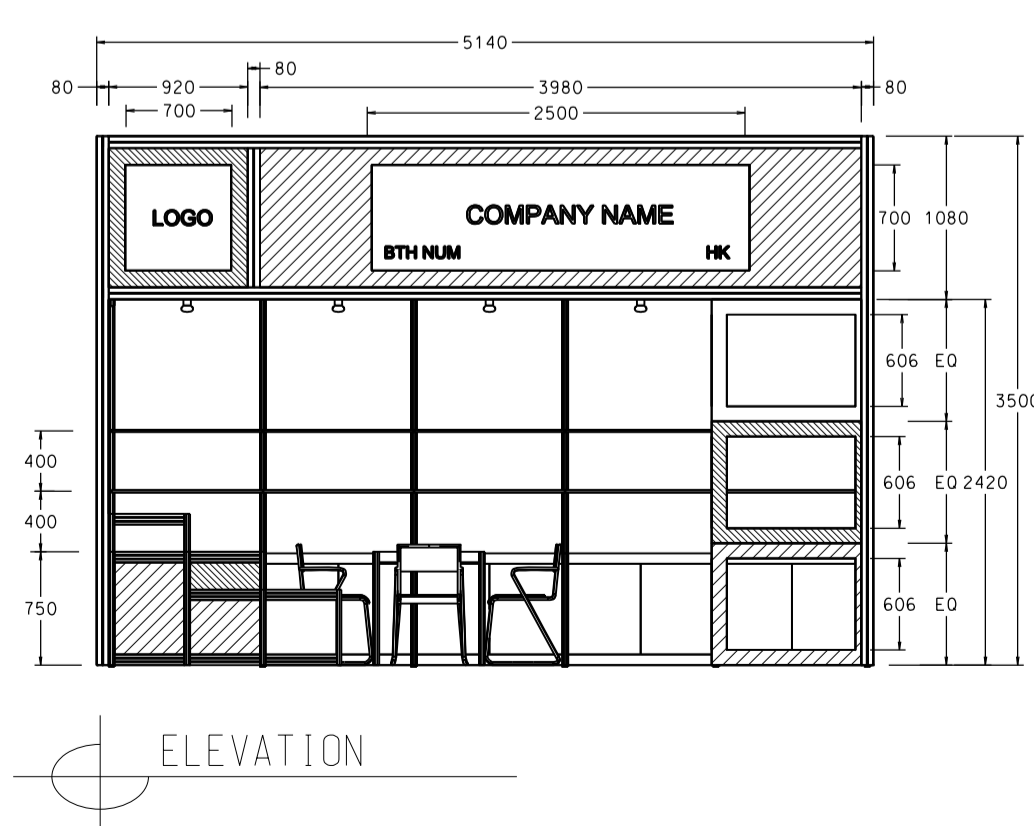
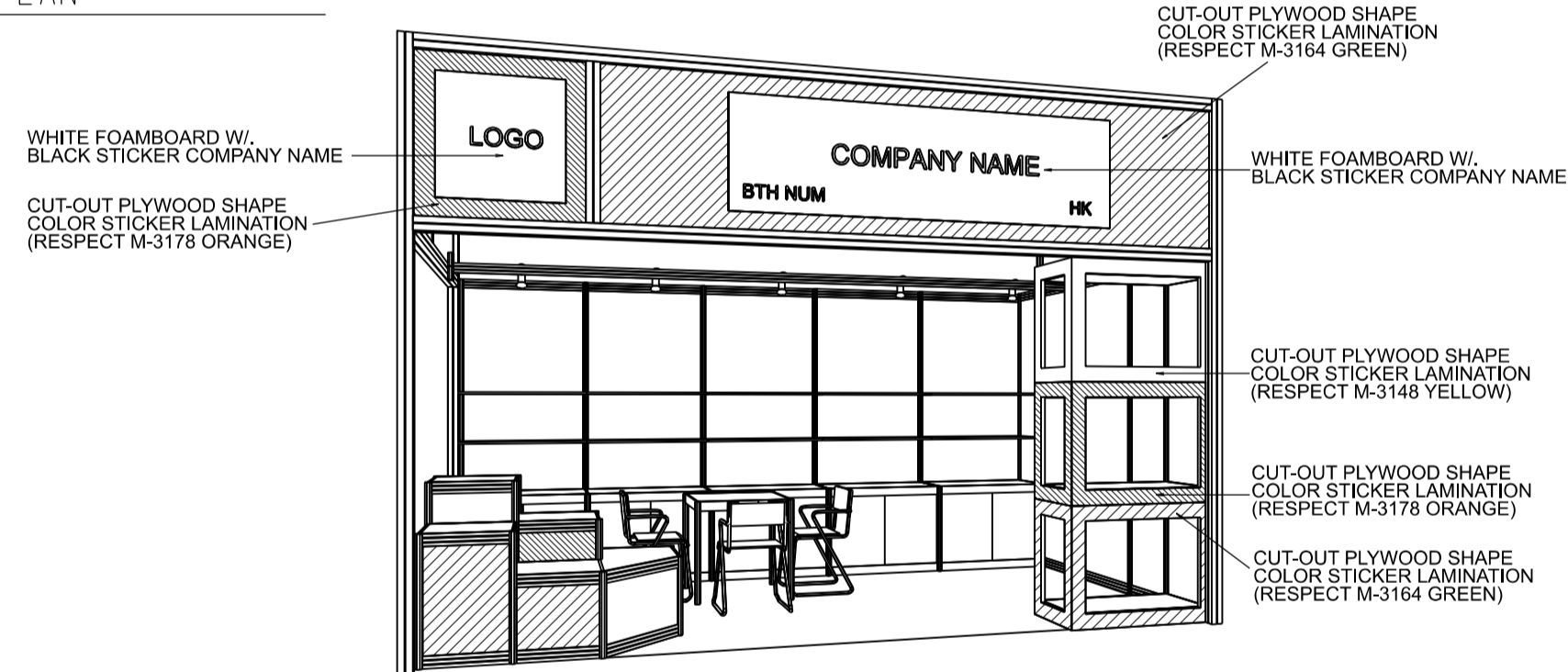
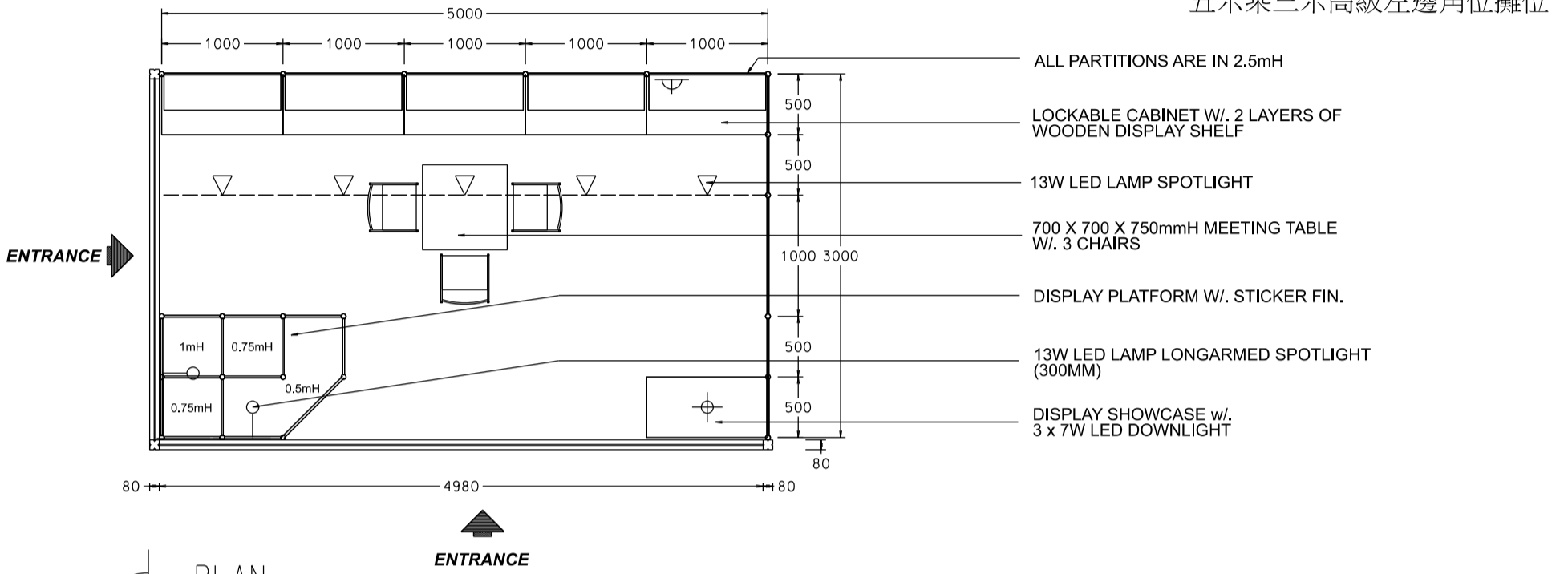


5M x 3M Deluxe Left Corner Booth

五米乘三米高級左邊角位攤位



| BOOTH SPECIFICATIONS | | QTY. |
|----------------------|--|------|
| | LOCKABLE CABINET 1000L x 500W x 750H mm | 5 |
| | WOODEN DISPLAY SHELF FLAT (2000W X 300D mm) | 2 |
| | WOODEN DISPLAY SHELF FLAT (3000W X 300D mm) | 2 |
| | DISPLAY PLATFORM IN STICKER LAMINATIONS 500 / 750 / 1000mmH | 1 |
| | DISPLAY SHOWCASE IN STICKER LAMINATIONS (3 LEVELS) W/ 3 X 7W LED DOWNLIGHT | 1 |
| | 13W LED LAMP SPOTLIGHT (YELLOW LIGHT) | 5 |
| | 13W LED LAMP LONGARMED SPOTLIGHT (300MM) (YELLOW LIGHT) | 2 |
| | 500w SQUARE PIN SOCKET | 1 |
| | 700W x 700D x 750H mm MEETING TABLE | 1 |
| | BLACK LEATHER CHAIR | 3 |
| | CEILING BEAM | 5M |
| | COMPANY LOGO | 2 |
| | RUBBISH BIN & CARPET (15sqm.) | |

*The Hong Kong Trade Development Council reserves the right to change the configuration if necessary.

*如有需要，香港貿易發展局有權更改攤位結構。