



**Exhibition Services**

**展覽服務**

# Additional Booth Facilities

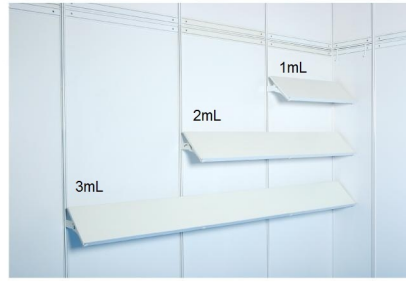


[www.hktdc.com](http://www.hktdc.com)





**FA007 1mL x 0.3D**  
**Wooden Display Shelf - Flat**  
 (1mL x 0.3mD, Max. Loading 3kg per metre)  
 平放式木層板 (1米長 x 0.3米深，  
 最大承重3公斤/每米計算)



**FA008 1mL x 0.3D**  
**Wooden Display Shelf - Slope** (1mL x 0.3mD,  
 Max. Loading 3kg per metre)  
 斜放式木層板 (1米長 x 0.3米深，  
 最大承重3公斤/每米計算)



**FA009**  
**Wooden Display Shelf with Structure**  
**Pole Mounted - Flat** (1mL x 0.5mD,  
 Max. Loading 10kg per metre)  
 平放式木層板 (1米長 x 0.5米深，  
 最大承重10公斤/每米計算)



**FA010**  
**Glass Display Shelf - Flat**  
 (1mL x 0.3mD, Max. Loading 2kg per metre)  
 平放玻璃層板 (1米長 x 0.3米深，  
 最大承重2公斤/每米計算)



**FA011**  
**Glass Display Shelf with Structure**  
**Pole Mounted - Flat**  
 (1mL x 0.5mD, Max. Loading 5kg per metre)  
 平放玻璃層板 (1米長 x 0.5米深，  
 最大承重5公斤/每米計算)



**FA013 / FA013A**  
**Cabinet with Sliding Doors**  
 (1mL x 0.5mW x 0.75mH / 1mH)  
 儲物櫃 (1米長 x 0.5米闊 x 0.75米高 / 1米高)



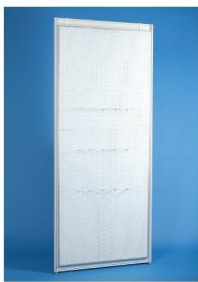
**FA014 / FA014A**  
**Table Showcase** (1mL x 0.5mD x 0.75mH / 1mH)  
 陳列飾櫃檯 (1米長 x 0.5米闊 x 0.75米高 / 1米高)



**FA015**  
**Table Showcase Counter**  
 (1mL x 0.5mD x 1mH)  
 陳列飾櫃連三面側板 (腳檯)  
 (1米長 x 0.5米闊 x 1米高)



**FA017**  
**Tall Showcase -**  
 2 Layers of Glass Shelf, 2 x 50 Watt  
 Halogen Downlights (Yellow Light)  
 (1mL x 0.5mD x 2.5mH)  
 高身陳列飾櫃連兩層玻璃層板及兩盞50瓦特  
 鹵素射燈 (黃光) (1米闊 x 0.5米深 x 2.5米高)



**FA020**  
**Pegboard with 30 Hooks** (1mL x 2.5mH)  
 有孔陳列板連30個掛鉤 (1米闊 x 2.5米高)



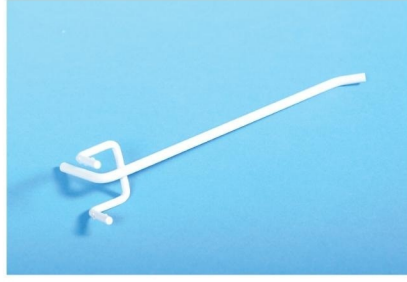
**FA021**  
**Pegboard with 30 Hooks** (1mL x 1.75mH)  
 (Cabinet excluded)  
 有孔陳列板連30個掛鉤  
 (1米闊 x 1.75米高，不包括地櫃)



**FA022**  
**Pegboard with 30 Hooks** (0.5mL x 2.5mH)  
 有孔陳列板連30個掛鉤 (0.5米闊 x 2.5米高)



**FA022A**  
Pegboard with 30 Hooks (0.5mL x 1.75mH)  
有孔陳列板連30個掛鉤 (0.5米闊 x 1.75米高)



**FA023**  
Pegboard Hook (For FA020, 021, 022, 022A only)  
有孔陳列板掛鉤 (只供FA020, 021, 022, 022A 的  
有孔陳列板使用)



**FA024**  
Garment Hanging Rack (1mL)  
(Plastic Garment Hanger excluded)  
掛衣通 (1米長) (不包括衣架)



**FA025 A**  
Vertical Garment Hook x 1 on clothes rod (1 set)  
曲衣架連斜衣鉤一個



**FA025**  
Vertical Garment Hook  
斜衣鉤



**FA026**  
Square Meeting Table  
(0.7mL x 0.7mD x 0.75mH)  
會議桌 (正方檯) (0.7米長 x 0.7米闊 x 0.75米高)



**FA027**  
Rectangular Table (1mL x 0.5mD x 0.75mH)  
諮詢檯 (長方檯) (1米長 x 0.5米闊 x 0.75米高)



**FA028 / FA028A**  
Information Counter (1mL x 0.5mD x 0.75mH/1mH)  
諮詢檯連三面側板 (腳擋)  
(1米長 x 0.5米闊 x 0.75米高/1米高)



**FA029**  
Black Leather Chair  
黑色皮椅



**FA030**  
Black Bar Stool (adjustable height)  
吧椅



**FA031**  
White Folding Door (1mL x 2mH)  
摺門 (1米闊 x 2米高)



**FA032**  
Wooden Swinging Door (1mL x 2mH)  
掩門 (1米闊 x 2米高)



**FA033**  
Smoked Glass Swinging Door (1mL x 2mH)  
玻璃門 (1米闊 x 2米高)



**FA034**  
Partition Panel (0.5mL x 2.5mH)  
間格用半米圍板 (0.5米闊 x 2.5米高)



**FA035**  
Partition Panel (1mL x 2.5mH)  
間格用一米圍板 (1米闊 x 2.5米高)



**FA036**  
Acrylic Panel (0.5mL x 2.5mH)  
透明膠片 (0.5米闊 x 2.5米高)



**FA037**  
Acrylic Panel (1mL x 2.5mH)  
透明膠片 (1米闊 x 2.5米高)



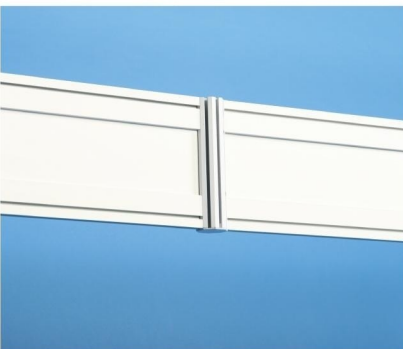
**FA038**  
Smoked Acrylic Panel (0.5mL x 2.5mH)  
磨砂膠片 (0.5米闊 x 2.5米高)



**FA039**  
Smoked Acrylic Panel (1mL x 2.5mH)  
磨砂膠片 (1米闊 x 2.5米高)



**FA040**  
Ceiling Beam (1mL x 70mmH)  
天花橫樑 (1米長 x 70毫米高)



**FA041**  
Ceiling Beam (1mL x 175mmH)  
天花橫樑 (1米長 x 175毫米高)



**FA042**  
Ceiling Grid per Square Metre (With metal mesh on top), 175mmH  
天花格(每平方米)(175毫米高) (連網格)



**FA044**  
Pentagonal Display Platform (0.75mH)  
五方展示台 (0.75米高)



**FA047**  
Round Table  
(700mm Diameter x 725mm Height)  
圓桌 (700mm直徑 x 725mm高)

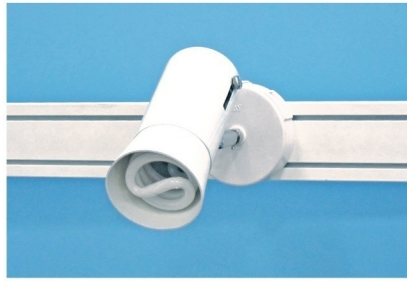


**FA051**  
Clothes Rod with 4 Hooks (1mL)  
曲衣架連4隻掛衣鉤(1米長)



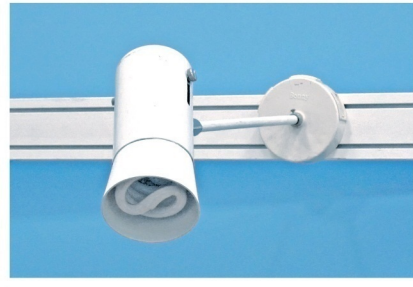
**LG006/LG026/LG027 /LG028**

500/1000/2000/2860 Watt Square Pin Power Socket (220V) for One Electrical Appliance only (Not permitted for Lighting connection)  
只供一件電器用500/1000/2000/2860瓦特電源方腳插座(220伏特)(不可用於照明裝置)



**LG011**

Spotlight 23 Watt Energy Saving Lamp (Yellow Light)  
短臂射燈(23瓦特慳電燈膽)(黃光)



**LG012**

Long Armed Spotlight (300mm) 23 Watt Energy Saving Lamp (Yellow Light)  
長臂射燈(約長300mm)(23瓦特慳電燈膽)(黃光)



**LG014**

Fluorescent Tube (1200mL) (White Light)  
光管(1200mm長)(白光)



**LG015**

Halogen Tracklight 50 Watt on 1 Metre Track (Yellow Light)  
鹵素路軌燈(黃光)(50瓦特)連一米長路軌



**LG016**

Halogen Downlight 50 Watt for Tall Showcase FA017 (Yellow Light)  
供FA017高身陳列飾櫃專用之鹵素射燈(黃光)(50瓦特)



**LG021**

Recess Downlight 23 Watt for Tall Showcase  
隱藏式射燈23瓦特慳電燈膽(黃色)



**LG022/LG023**

Halogen Floodlight 300/500 Watt, Adjustable Angle (Yellow Light)  
鹵素泛光燈, 俗稱「小太陽」(300/500瓦特)(黃光)



**LG024**

HQI Floodlight 250 Watt, Adjustable Angle (White Light)  
HQI白光燈(250瓦特)(白光)



**LG025**

HQI Floodlight 70 Watt (White Light) (Inside Tall Showcase (FA017))  
HQI白光燈(70瓦特)(白光)  
(供FA017高身陳列飾櫃照明用)



**MS001**  
Bust with stand - Male Body, Black Colour  
半身模特兒連企座 - 男身，黑色



**MS002**  
Bust with stand - Female Body, Black Colour  
半身模特兒連企座 - 女身，黑色



**MS003**  
Plastic Garment Hanger (10 Pieces) - Black Colour  
塑膠製衣架 (每十個計) - 黑色



**MS005**  
Movable Mirror  
活動全身鏡



**MS006**  
Movable Garment Hanging Rack (1215-1830mmL x 460mmW x 1130-1850 mmH)  
活動掛衣通 (1215-1830毫米長 x 460毫米闊 x (1130-1850)毫米高)



**PL001A**  
Potted Plant - Chrysalidocarpus (1mH)  
盆栽 - 散尾葵 (1米高)



**PL001B**  
Potted Plant - Schefflera (Gold Capella) (0.3mH)  
盆栽 - 傘樹 (0.3米高)



**PL001C**  
Potted Plant - Boston Fern (0.3mH)  
盆栽 - 波士頓芒 (0.3米高)



**PL001D**  
Potted Plant - Codiaeum Tree (0.3mH)  
盆栽 - 酒金 (0.3米高)

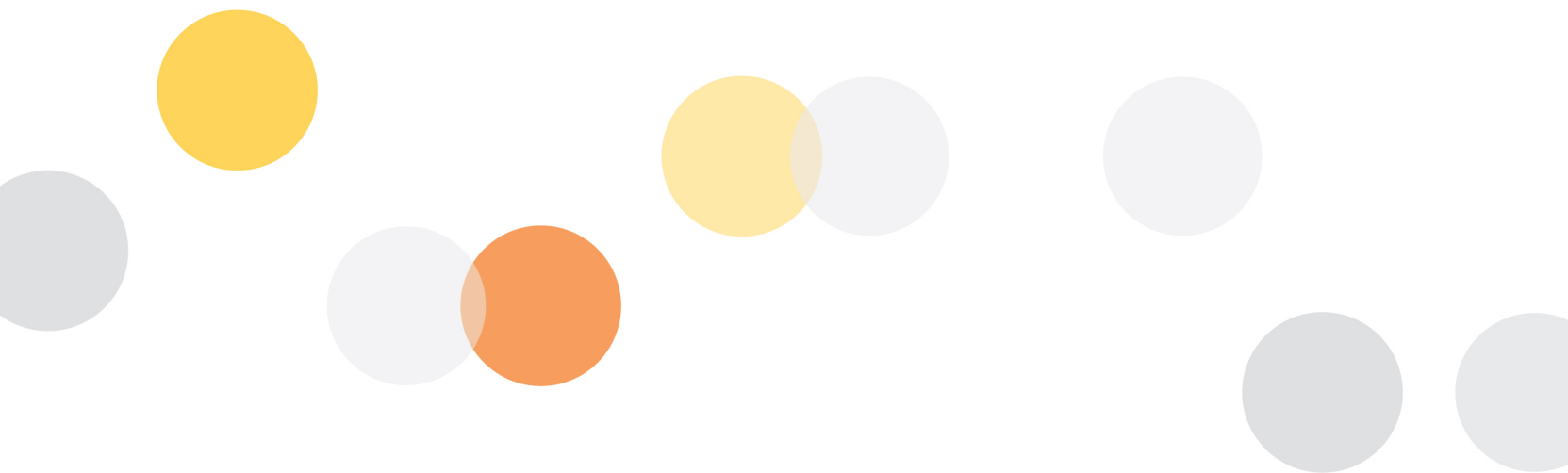
Facilities photo for reference only, the information is subject to change without prior notice.  
設施相片只供參考，如有任何改動不會另行通知。



**Additional Booth Facilities 額外攤位設備**  
The Hong Kong Trade Development Council reserves the right to change configuration of booth and services/equipment providing if necessary.  
如有需要，香港貿發局有權更改有關攤位結構及設施/服務供應。



**PL002**  
Fresh Flower Arrangement (approx. 0.3mH)  
鮮花擺設(約0.3米高)  
(photo for reference only) (相片僅供參考)



香港貿易發展局

Hong Kong Trade Development Council 香港貿易發展局  
83 Chun Yat Street, Tseung Kwan O Industrial Estate,  
Tseung Kwan O, Kowloon, Hong Kong  
香港九龍將軍澳將軍澳工業村駿日街83號  
Tel: (852) 2240 5499 Fax: (852) 3521 0450

[www.hktdc.com](http://www.hktdc.com)

